

**100+ YEARS OF EUROPEAN
TRUST & COMMITMENT**



Next Step To Future

XR 16

1.6Ton Capacity Reach Truck



WHY BUY ME?

- ✓ High performance heavy duty Reach Truck with full AC motors
- ✓ Safest Reach Truck with OPS, Seat Belt sensing system & dead-man switch system
- ✓ Safest Reach Truck in terms of electromagnetic braking system on drive wheel supported by mechanical brakes on load wheels
- ✓ Three variable travel speed for varied applications
- ✓ Easy to ride with 360 degree Electric Steering system



TOLL FREE NUMBER- 1800 270 1123

BRAND HISTORY

1917



Founded in **1917**; starts in 1918 the production of cars

1933



In **1933**, acquisition by FIAT Group

1937



In **1937** The Plants Of Milan And Brescia Are Unified And The agricultural Machinery Division Of Suzzaral Is Incorporated With The Growth Of 3 New Segments :
1.Buses, Trucks, **2.**Rail Equipment, Agricultural Tractors, Forklift Trucks, Marine Engines
3.Engine Pumps And Cooling Systems

1957



In **1957** OM becomes FIAT Carrelli Elevatori, belonging to IVECO Division

1961



In **1961** PIMESPO, Piccola Industria Meccanica sul Po was born in Luzzara, manufacturing WH Trucks

1981



In **1981** FIAT IVECO acquires PIMESPO.

1992



In **1992** LINDE Group acquires from FIAT the Forklift Division.

2002



In **2002** the Company changes his name into OM Carrelli Elevatori keeping the Brand OM PIMESPO.

2005



In **2005** Luzzara becomes a Plant for the whole STILL Group

2006



In **2006** Linde, Still and OM are unified into the KION Group.

2017



In **2017**, OM launched in Indian market.



REACH TRUCK - XR16

Maximum Reliability



- XR Reach Truck is equipped with modern AC motors and electrical systems and wiring protected to IP 45 meaning dust-proof and spary-proof.

Safety and Ergonomics



- Hydraulic functions and the electrical controls ergonomically arranged for easy access and intuitive operation.



Braking Systems



- 3 independent braking systems
- Electric brake with energy recovery
- Hydraulic brake acts on the two load wheels
- Electromagnetic parking brake, which is activated in parking mode
- Emergency mode when the red safety button is pressed.

State-of-the-art electronic system



- The XR-16 uses a high frequency electronic system for traction and lift control

Salient Features

- Electronic Power Steering 360°
- Adjustable steering column
- Tilt Fork -2° / +4°
- Integral Side Shifter $\pm 100\text{mm}$
- CAN BUS mode of fault detection
- Two Simultaneous Movement (Lift & Carriage)
- Three Speed Profiles
- Electronic Creep Speed Selector
- Traction Speed, acceleration, electric braking, hydraulic braking & hydraulic function are electronically adjusted.
- Proportionally controlled hydraulic functions operated by potentiometric fingertip levers for precise control and movement
- Vulkollan drive tyre to absorb shocks.
- Reliable and robust European mast
- Battery Roll Out
- FEM II B Forks 1150mm
- Regenerative Braking
- Load Backrest

Safety Features

- Dead man Load ensures truck starts only when the operator is in right position to operate
- Emergency Stop Button
- Pre- height selector as optional
- Adjustable weight Sensors to avoid accidental operation
- Three Braking Systems-Regenerative Braking, Hydraulic and Electromagnetic
- High Drive Position
- Excellent All Round Visibility
- Excellent Overhead Visibility through Overhead Guard
- Seat Belt



OVERALL DIMENSIONS AND SPECIFICATIONS FOR REACH TRUCK

CHARACTERISTICS	1.1	Manufacturer		KION
	1.2	Model		XR16
	1.3	Power unit		Electric
	1.4	Operator type		Seated
	1.5	Loading capacity	Q (t)	1.6
	1.6	Centre of gravity	c (mm)	600
	1.7	Load Distance	x (mm)	365
	1.8	Wheelbase	y (mm)	1442
WHEEL & TYRES	2.1	Tyre type		VULKOLLAN
	2.2	Size of traction wheels	mm	343 x 136
	2.3	Size of load wheels	mm	310 x 102
	2.4	Wheels: number at front/back (x= traction)		1x / 2
	2.5	Rear track (load wheels)	b11 (mm)	1140
DIMENSIONS AND OVERALL SIZES	3.1	Fork tilt	degree	2/4
	3.2	Total length	l1 (mm)	2556
	3.3	Length to fork face	l2 (mm)	1406
	3.4	Total width	b1 (mm)	1250
	3.5	Fork dimensions	s/e/l (mm)	50 / 100 / 1150
	3.6	Fork carriage		FEM II B
	3.7	Forks spread (outside)	b5 (mm)	690
	3.8	Reach legs width (inside)	b4 (mm)	925
	3.9	Reach	l4 (mm)	585
	3.10	Ground clearance under mast - laden	m1 (mm)	100
	3.11	Ground clearance at wheel-base centre - laden	m2 (mm)	76
	3.12	90° stacking aisle 1000 x 1200 crosswise	Ast (mm)	2776
	3.13	Minimum turning radius	Wa (mm)	1702
	3.14	Length including reach legs	l7 (mm)	1870
PERFORMANCE	4.1	Travel speed (loaded/unloaded)	km/h	12.0 / 12.0
	4.2	Lifting speed (loaded/unloaded)	m/s	0.32/0.60
	4.3	Lowering speed (loaded/unloaded)	m/s	0.54/0.46
	4.4	Max gradient KB30' (loaded/unloaded)	%	10/15
	4.5	Max climbing gradient KB5' (loaded/unloaded)	%	4.5 / 12
	4.6	Service brake		EM Brake/ Hydromechanic with pedal on load wheels
ENGINES	5.1	Traction motor, performance KB 60'	kW	6
	5.2	Lifting motor, performance 15% ED	kW	11.5
	5.3	Battery standard		DIN 43531 C
	5.4	Voltage / Rated capacity	V / Ah	48/620
	5.5	Weight of battery (+/-5%)	kg	1000
	5.6	Power consumption according to VDI cycle	V / Ah	5.2
OTHERS	6.1	Type of control		Electronic tri-phase
	6.2	Working pressure for attachment	bar	140
	6.3	Oil capacity	l/min	18
	6.4	Noise level for operator	dB (A)	< 70



MAST SPECIFICATON (in mm)

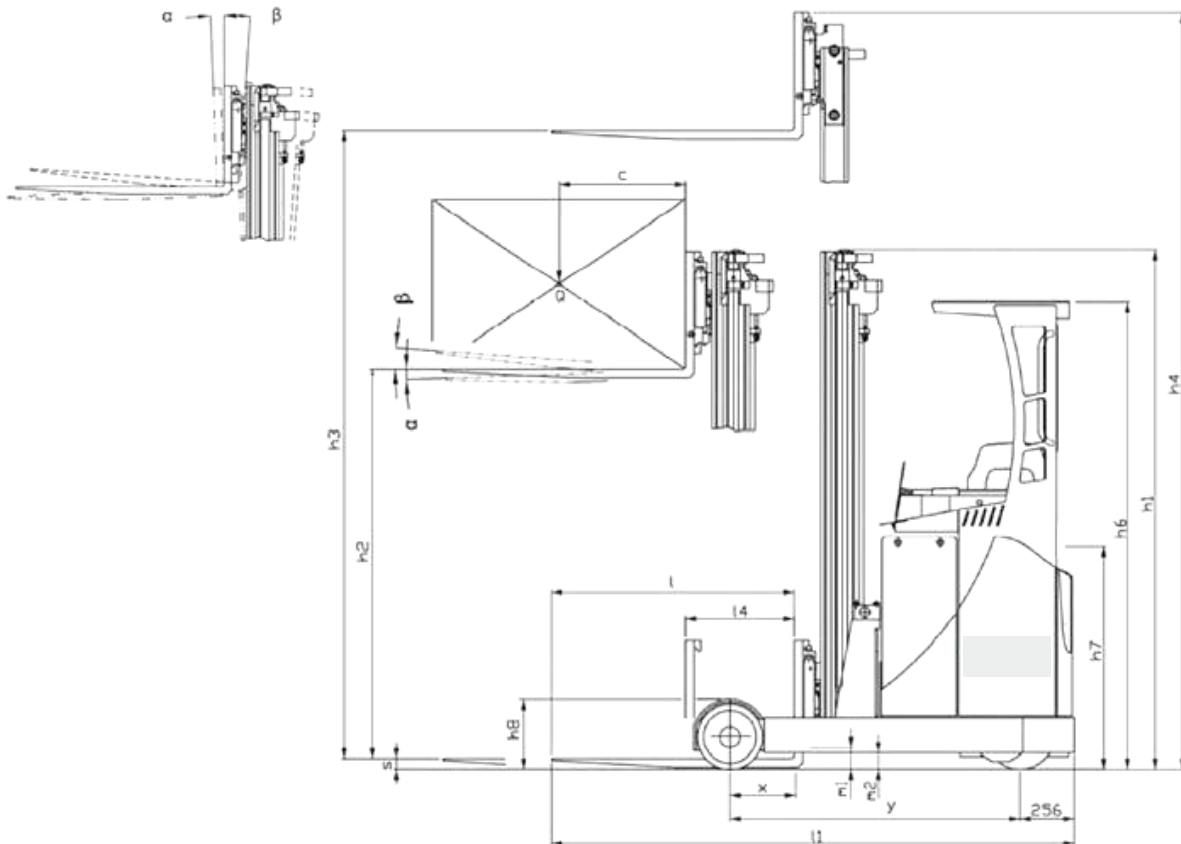
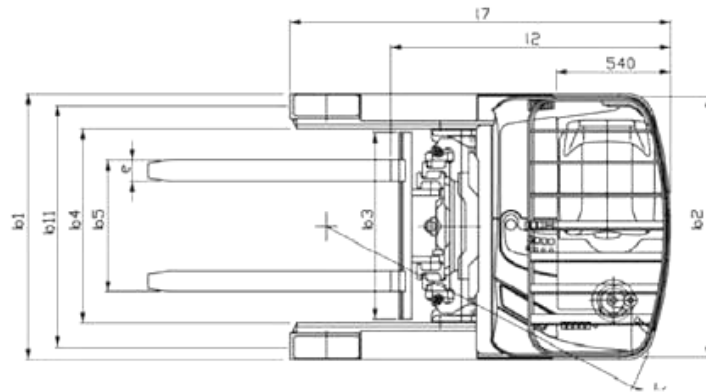
Mast type	CLOSED MAST HEIGHT (H1)	Free Lift (H2)	Lift Stroke (H3)	Extended Mast Height (H4)	Derated Capacity (Kg)
HVT 8825	3600	2970	8825	9455	1400
HVT 9625	3900	3270	9625	10255	1200
HVT 11525	4900	4270	11525	12155	850

All specifications are subjected to $\pm 12\%$ tolerance apart from those governed by BIS.
Due to continuous design improvements, the specifications are subject to change without notice.

$$Ast = W_d + R + a$$

$$R = \sqrt{(l_6 - x)^2 + \left(\frac{b_{12}}{2}\right)^2}$$

$$a = 200 \text{ mm}$$



100+ CUSTOMER TOUCH POINTS FOR SALES & SERVICE



Address :

KION INDIA Private Limited, 5/4 Chandan Nagar,
Pune Nagar Road, Pune-411014

TOLL FREE NUMBER- 1800 270 1123